

Latest trends in SOX compliance...

How to stay a step ahead of your
auditors

Course Outline

- ▣ Introductions
- ▣ The One... Configuration
- ▣ The One... Profile Option
- ▣ The One... Function
- ▣ Application Controls
- ▣ IT Users
- ▣ Lookback Procedures
- ▣ GRC software

Introductions

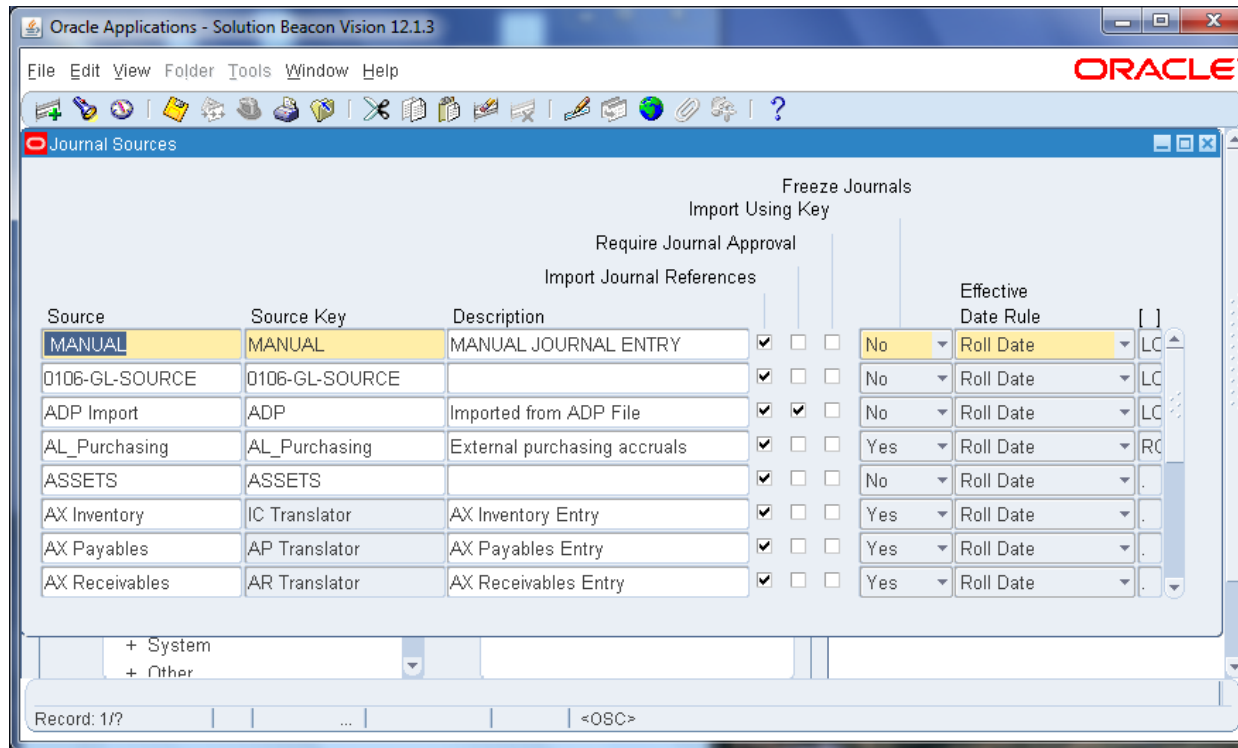
Jeffrey T. Hare, CPA CISA CIA

- Founder of ERP Risk Advisors
- Written various white papers on Internal Controls and Security Best Practices
- Frequent contributor to OAUG's Insight magazine
- Experience includes Big 4 audit, 6 years in CFO/Controller roles – both auditor and audited perspectives
- In Oracle applications space since 1997– both client and consultant perspectives
- Founder of Internal Controls Repository – public domain repository
- Author:
 - Book Oracle E-Business Suite Controls: Application Security Fundamentals
 - Book: Auditing Oracle E-Business Suite: Common Issues

The One... Configuration

The One... Configuration

Journal Sources / Manual Journal Entries



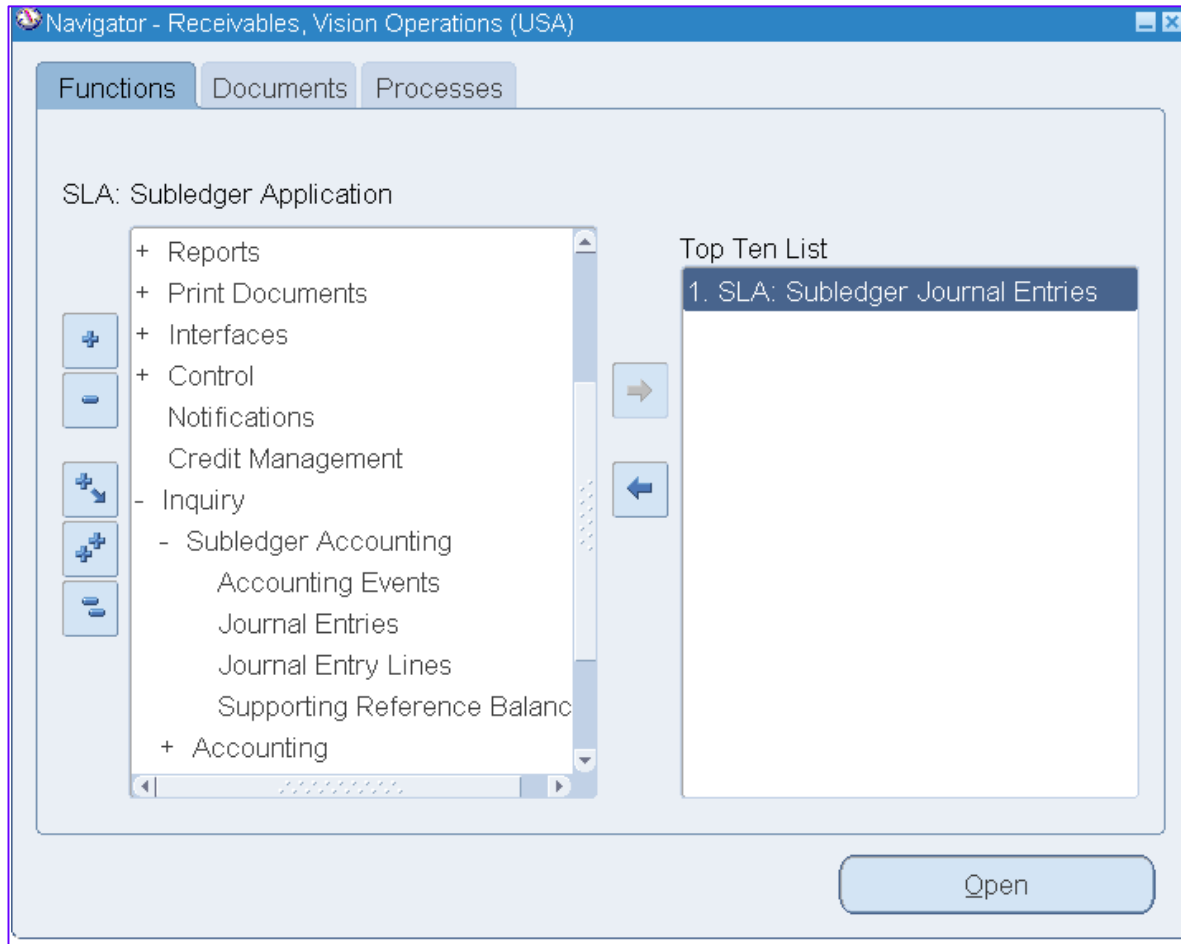
The One... Profile Option

The One... Profile Option

- ▣ GLDI: Journal Source
 - ▣ Validation of Source when importing a JE from Web ADI

The One... Function

The One... The One... Function



The One... The One... Function

The screenshot displays the Oracle Subledger Journal Entries interface. At the top, the Oracle logo is on the left, and navigation links for Navigator, Favorites, Close Window, Preferences, and Help are on the right. Below the header, there are tabs for Subledger Journal Entries, Accounting Events, and Supporting Reference Balances. The main content area is titled 'Subledger Journal Entries' and contains an 'Advanced Search' section. This section includes a search instruction and two radio buttons: 'Show table data when all conditions are met.' (selected) and 'Show table data when any condition is met.' Below these are four search criteria: Ledger (is), From GL Date (is), To GL Date (is), and Journal Category (is). Each criterion has a dropdown menu and a search input field. At the bottom of the search section are 'Go', 'Clear', 'Add Another', and 'Add' buttons, along with a dropdown for 'Accounting Sequence Name'. Below the search section is a 'Create Journal Entry' button. A table with the following columns is shown: Select Ledger, Journal Entry Status, GL Date, Category, Description, Update, Duplicate, Reverse, and Complete. The table contains one row with the text 'No search conducted.' in the 'Select Ledger' column. At the bottom of the interface, there is a footer with 'Privacy Statement' on the left and 'Copyright (c) 2008, Oracle. All rights reserved.' on the right.

Application Controls

Application Controls

- ▣ Types of Application Controls
 - ▣ Journal Approval Workflow
 - ▣ AR Adjustments
 - ▣ 3-way match

- ▣ Expected Controls
 - ▣ Configurations go through change control
 - ▣ No ability to override control
 - ▣ IT users should not have transaction

IT Users

IT Users

- ▣ Viewing IT users – Business Analysts, etc
 - ▣ No longer acceptable to 'accept risk'
 - ▣ Required to justify their access
 - ▣ Required to evaluate what they have done with the access they have
 - ▣ Identify mitigating controls
 - ▣ Lookback procedures

Lookback Procedures

Lookback Procedures

- Those with unauthorized / unapproved access
 - Identify what users have done
 - Present changes to the process owner
 - Process owner to review and approve activity
 - Why are IT users making changes in Prod at all?
 - Super user access provides ability to:
 - Master data
 - Transactions
 - Configurations

GRC Software

GRC Software

GRC Software

- Almost required by PWC
- Capable of:
 - SoD / Single Function Analysis
 - 1000+ rules / 2200+ functions
 - Prevent / Approve / Detect
 - Automate provisioning
 - Automate quarterly access reviews
 - Develop detailed audit trail of changes

Wrap Up, Q&A, Contact Information



Services and offerings

- VAR, Implementation Partner of CaoSys GRC software that competes with Oracle's GRC suite
- Covering over 1,000 SoD and Sensitive Access rules, nearly 3,000 functions, and nearly 1,500 high risk concurrent programs
- Application security design / redesign
- Audit support – particularly for application security and application controls

Services and offerings

- Health check / assessments – for IT or internal audit
- Internal controls and security training through MISTI
 - Class in San Francisco – 12-Dec to 14-Dec
 - <http://misti.com/event-details?EVENTID=14209&ORGCODE=10>

Contact Information

- Jeffrey T. Hare, CPA CISA CIA
 - Cell: 970-324-1450
 - E-mail: jhare@erpra.net
 - Websites: www.erpra.net
 - LinkedIn: www.linkedin.com/in/jeffreythare
 - Twitter: @jeffreythare